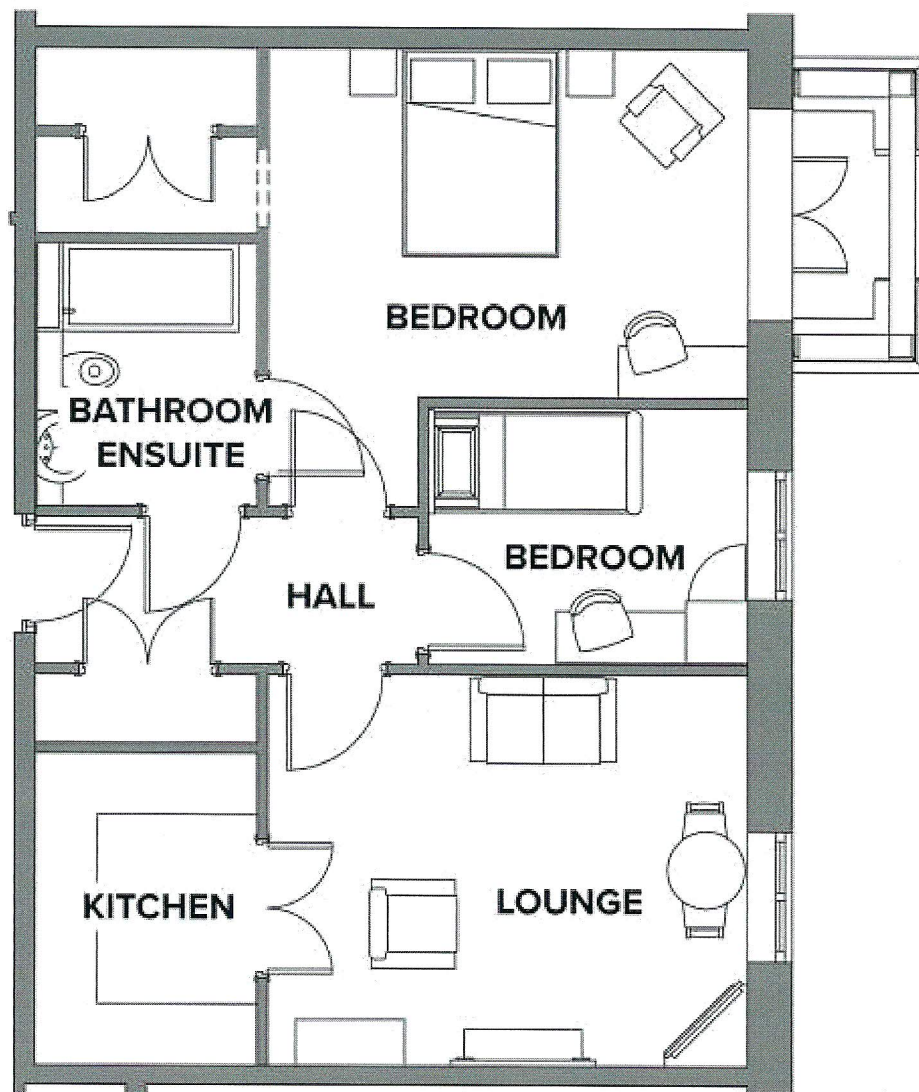


A6 THE VILLAGE CENTRE

ASSISTED LIVING, TWO BEDROOM APARTMENT



Price: £POA*, First Floor

Our spacious two bedroom assisted living apartments offer the perfect balance of style and function, centrally located to ensure easy access to all village facilities.

Internal measurements: 700sq ft

Lounge	15' 3" x 12' 6"	4,648 x 3,798mm
Kitchen	7' 1" x 9' 11"	2,145 x 3,020mm
Bedroom 1	15' 3" x 14' 7"	4,648 x 4,429mm
Bedroom 1 Ensuite	6' 11" x 8' 4"	2,100 x 2,531mm
Bedroom 2	10' 3" x 8' 3"	3,100 x 2,506mm

All layouts/dimensions are for illustrative purposes only. Maximum distances shown.

*Based on a 125-year lease, and subject to event fees and ground rent. Please ask for further information.

Version 1 - 18-09-2017